

S11154-201CT

Reduced color temperature errors

The S11154-201CT is a photo IC diode with spectral response characteristics that closely resemble human eye sensitivity. Two active areas are formed on the same chip, and the outputs of the two active areas are subtracted from each other by the current amplifier circuit, in order to have sensitivity almost only in the visible range and reduce the color temperature errors.

Features

- Spectral response close to human eye sensitivity
- Reduced color temperature error
- Lower output-current variation compared with phototransistors
- Excellent linearity
- Low output deviation by different color temperature light source
- Suitable for lead-free reflow (RoHS compliance)

Applications

- Energy-saving sensor for large-screen TVs, etc.
- Various types of light level measurement

Absolute maximum ratings (Ta=25 °C)

Parameter	Symbol	Condition	Specification	Unit
Reverse voltage	V _R		-0.5 to +12	V
Photocurrent	I _L		5	mA
Forward current	I _F		5	mA
Power dissipation*1	P		150	mW
Operating temperature	T _{opr}	No dew condensation*2	-30 to +80	°C
Storage temperature	T _{stg}	No dew condensation*2	-40 to +85	°C
Reflow soldering conditions*3	T _{sol}		Peak temperature 260 °C max., two times (see P.7)	-

*1: Power dissipation decreases at a rate of 2 mW/°C above Ta=25 °C.

*2: When there is a temperature difference between a product and the surrounding area in high humidity environment, dew condensation may occur on the product surface. Dew condensation on the product may cause deterioration in characteristics and reliability.

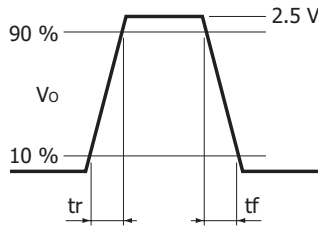
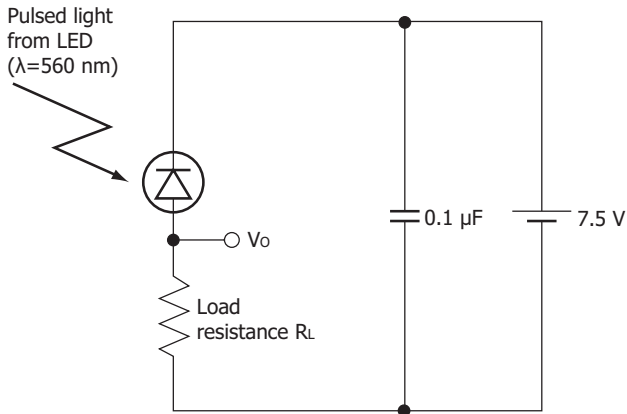
*3: JEDEC level 3

Note: Exceeding the absolute maximum ratings even momentarily may cause a drop in product quality. Always be sure to use the product within the absolute maximum ratings.

Electrical and optical characteristics (Ta=25 °C)

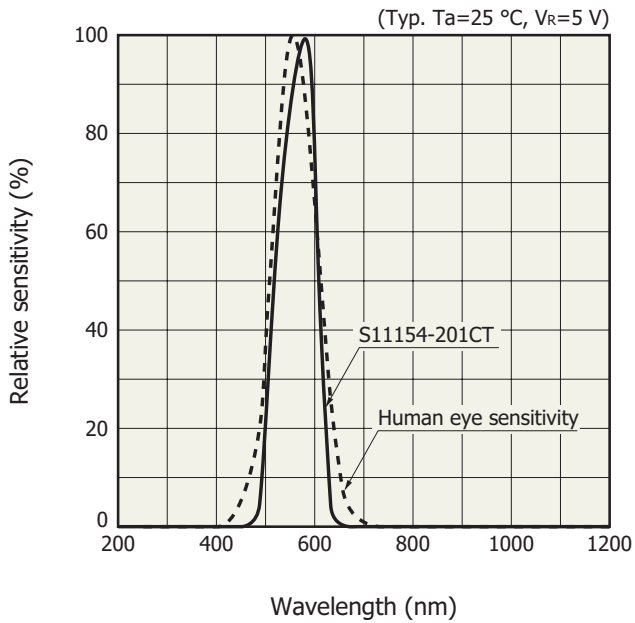
Parameter	Symbol	Condition	Min.	Typ.	Max.	Unit
Spectral response range	λ		-	480 to 640	-	nm
Peak sensitivity wavelength	λ _p		-	580	-	nm
Dark current	I _D	V _R =5 V	-	1.0	50	nA
Photocurrent	I _L	V _R =5 V, 2856 K 100 lx	70	-	150	μA
Rise time*4	t _r	10 to 90 %, V _R =7.5 V	-	6.0	-	ms
Fall time*4	t _f	R _L =10 kΩ, λ=560 nm	-	2.5	-	ms

*4 Rise/fall time measurement method



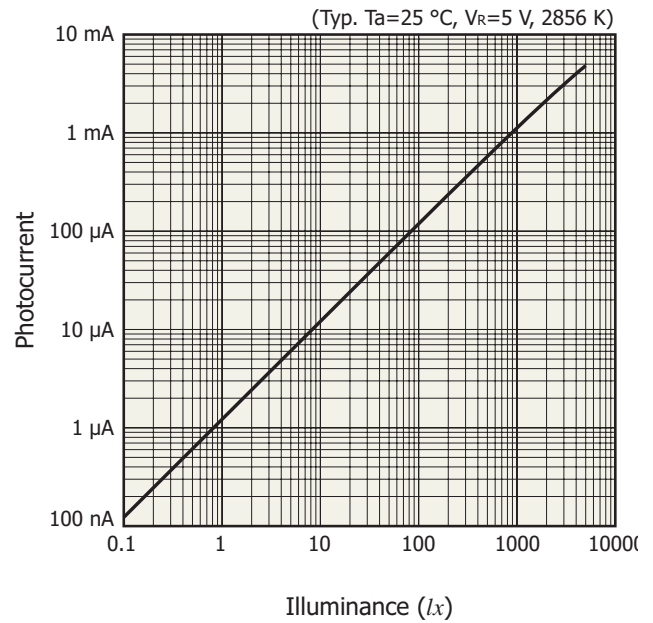
KPIC0041EA

▣ Spectral response



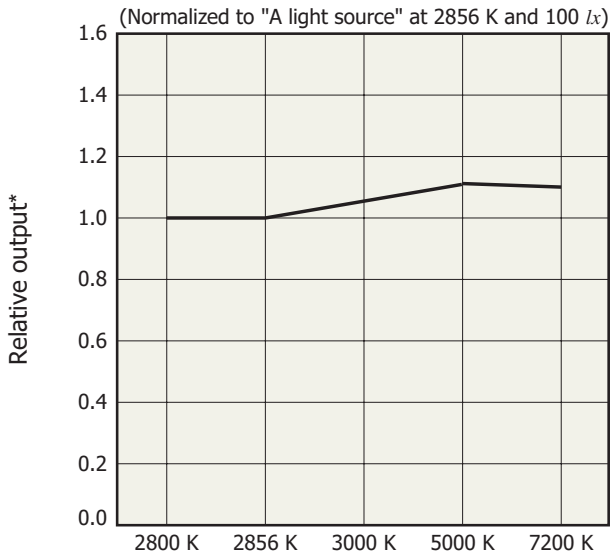
KPIC0129EB

▣ Photocurrent vs. illuminance



KPIC0141EC

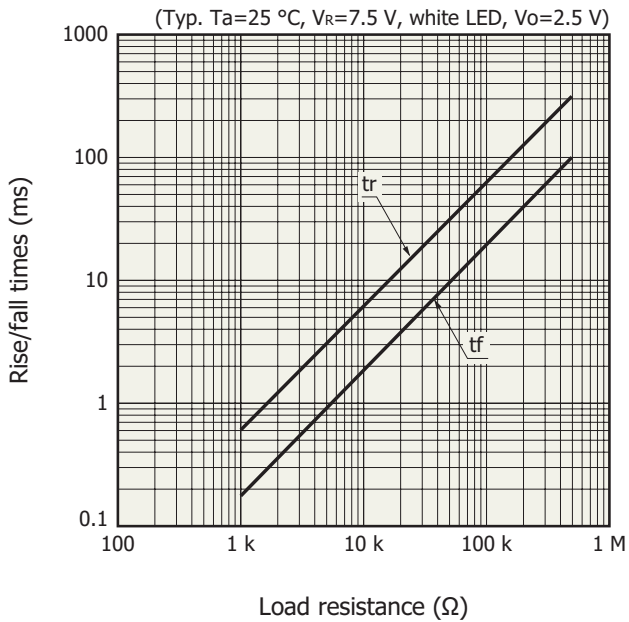
Color temperature error (difference between various light sources)



2800 K: Silica bulb
 2856 K: A light source
 3000 K: Fluorescent light bulb
 5000 K: Fluorescent light bulb
 7200 K: Fluorescent light bulb
 * At 2856 K normalized to 100

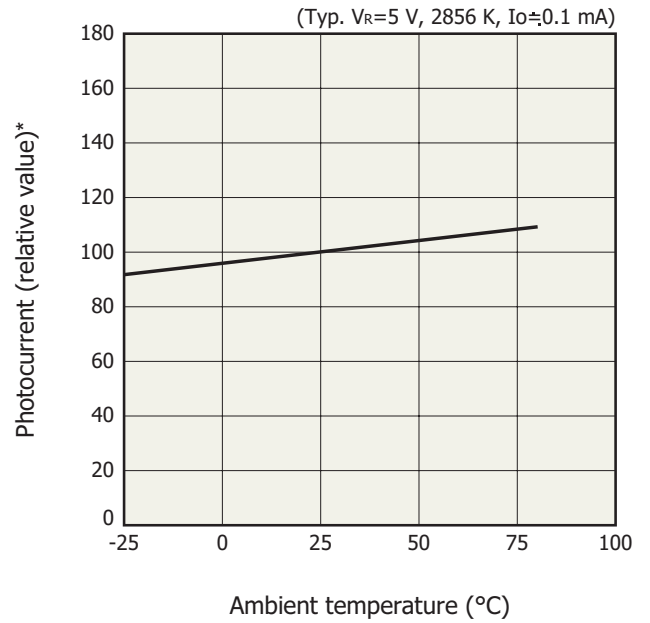
KPICB0140EC

Rise/fall times vs. load resistance



KPICB0143EA

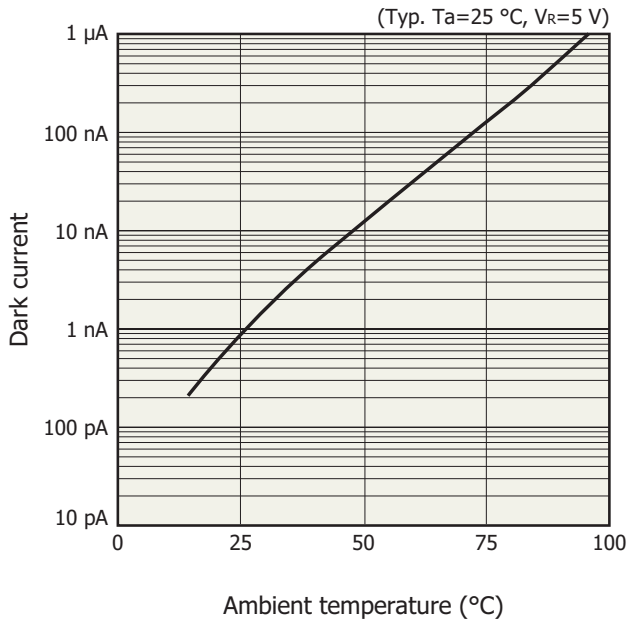
Photocurrent vs. ambient temperature



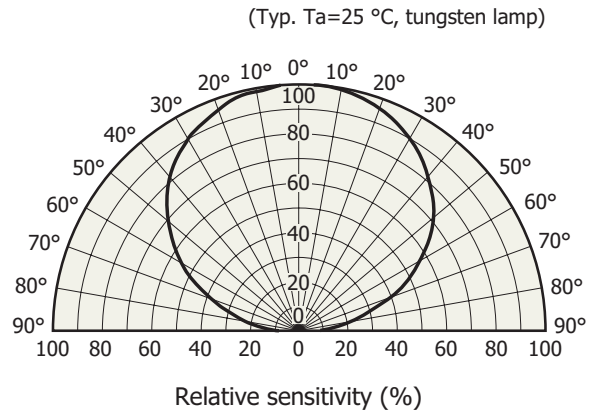
*At $T_a=25\text{ }^\circ\text{C}$ normalized to 100.

KPICB0144EA

Dark current vs. ambient temperature



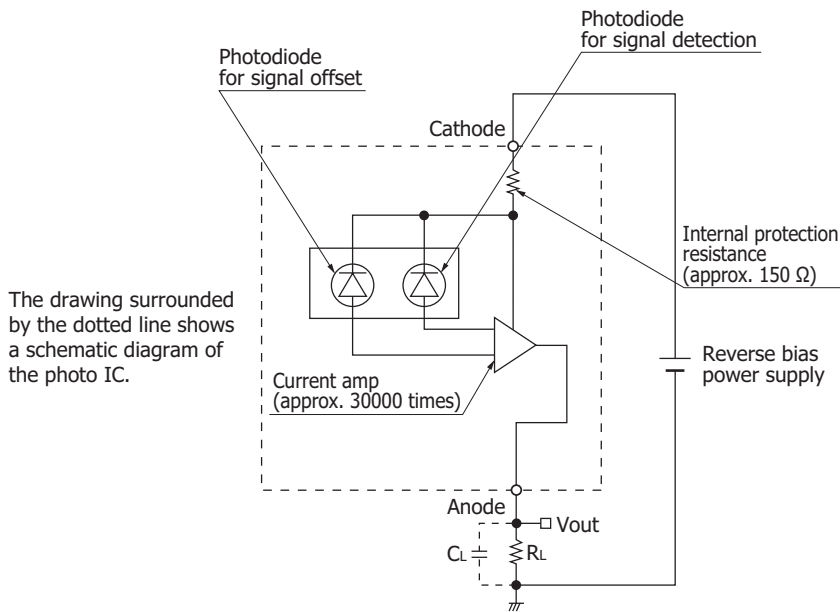
Directivity



KPICB0145EA

KPICB0146EA

Block diagram

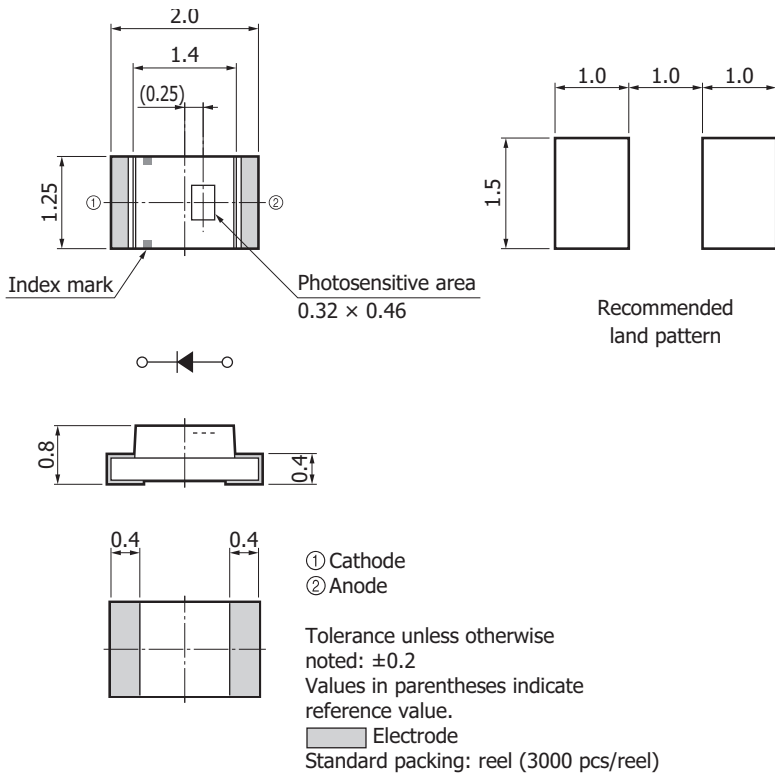


KPICC0132EA

The photo IC diode must be reverse-biased so that a positive potential is applied to the cathode.
 To eliminate high-frequency components, we recommend placing a load capacitance C_L in parallel with load resistance R_L as a low-pass filter.

$$\text{Cut-off frequency } f_c \approx \frac{1}{2\pi C_L R_L}$$

Dimensional outline (unit: mm)



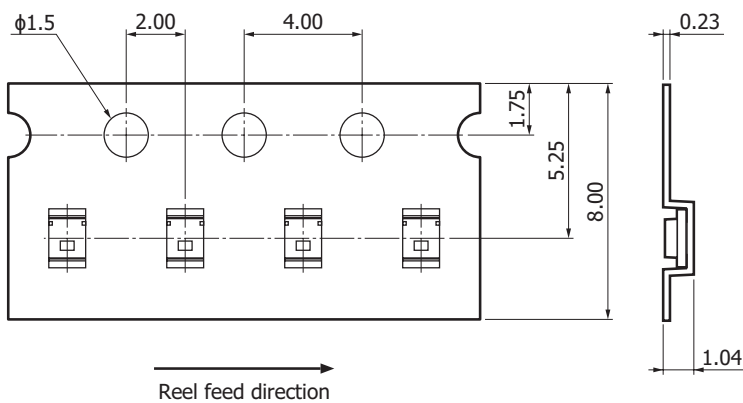
KPICA0072EB

Standard packing specifications

- Reel (conforms to JEITA ET-7200)

Dimensions	Hub diameter	Tape width	Material	Electrostatic characteristic
178 mm	60 mm	8 mm	PS	Conductive

- Embossed tape (unit: mm, material: PS, conductive)



KPIC0234EA

- Packing quantity
3000 pcs/reel
- Packing type
Reel and desiccant in moisture-proof packing (vacuum-sealed)

Operating voltage, output characteristics

Figure 2 shows the photocurrent vs. reverse voltage characteristics (light source: LED) for the measurement circuit example in Figure 1. The output curves are shown for illuminance levels. The output curves rise from a reverse voltage (rising voltage) of approximately 0.7 V ($\pm 10\%$).

To protect the photo IC diode from excessive current, a 150 Ω ($\pm 20\%$) protection resistor is inserted in the circuit. Reverse voltage V_R when the photo IC diode is saturated is the sum of $V_{be(ON)}$ and the voltage drop across the protection resistor R_{in} [Equation (1)].

$$V_R = V_{be(ON)} + I_L \times R_{in} \dots\dots\dots (1)$$

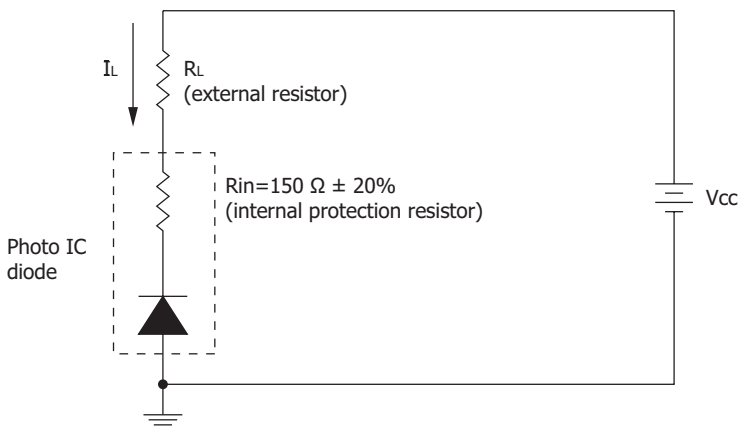
The photodiode's reverse voltage (V_R) is expressed by Equation (2) according to the voltage drop across the external resistor. This is indicated as load lines in Figure 2.

$$V_R = V_{cc} - I_L \times R_L \dots\dots\dots (2)$$

In Figure 2, the intersections between the output curves and the load lines are the saturation points. From these points, the maximum detectable light level can be specified. Since the maximum light level is determined by the supply voltage (V_{cc}) and load resistance (R_L), adjust them according to the operating conditions.

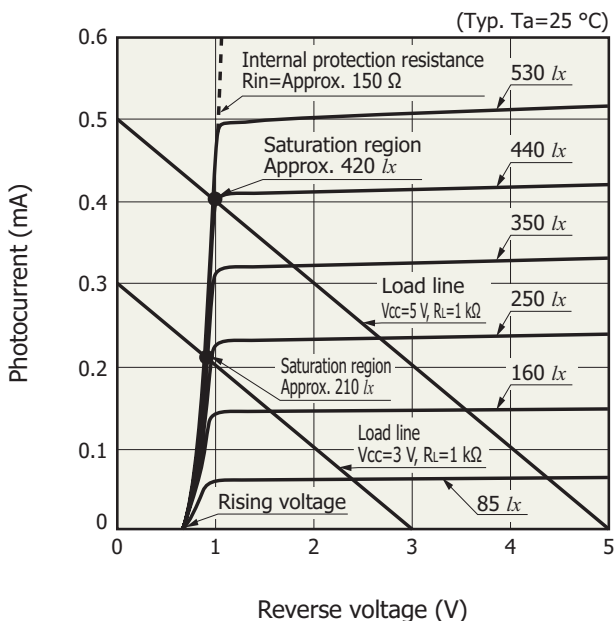
Note: The temperature characteristics of $V_{be(ON)}$ is approximately $-2 \text{ mV}/^\circ\text{C}$, and that of the protection resistor is approximately $0.1\%/^\circ\text{C}$.

■ Figure 1 Measurement circuit example



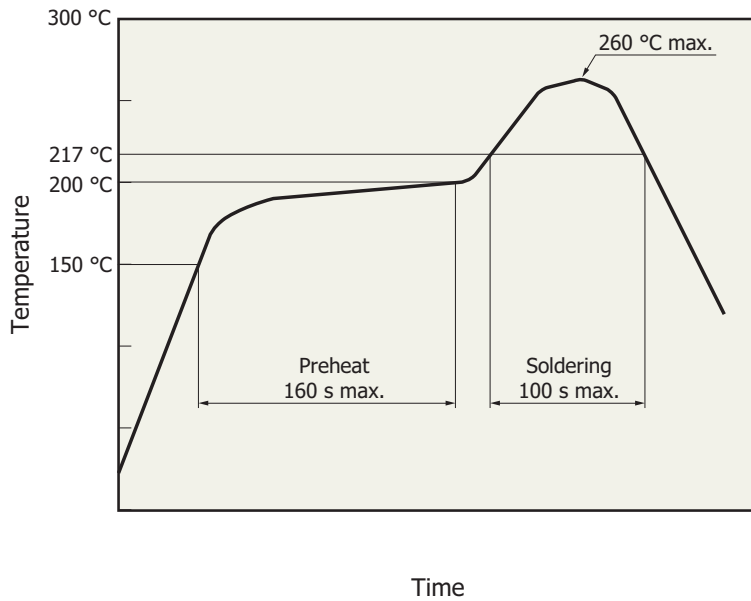
KPIC00128EC

■ Figure 2 Photocurrent vs. reverse voltage



KPIC00147EB

Example of temperature profile measured with hot-air reflow oven for our product testing



KPICB0119EB

- This product supports lead-free soldering. After unpacking, store it in an environment at a temperature of 30 °C or less and a humidity of 60% or less, and perform soldering within 168 hours.
- The effect that the product receives during reflow soldering varies depending on the circuit board and reflow oven that are used. When setting the reflow soldering conditions, check for any problems by testing out the reflow soldering methods in advance.

Related information

www.hamamatsu.com/sp/ssd/doc_en.html

Precautions

- Disclaimer

Information described in this material is current as of August, 2015.

Product specifications are subject to change without prior notice due to improvements or other reasons. This document has been carefully prepared and the information contained is believed to be accurate. In rare cases, however, there may be inaccuracies such as text errors. Before using these products, always contact us for the delivery specification sheet to check the latest specifications.

The product warranty is valid for one year after delivery and is limited to product repair or replacement for defects discovered and reported to us within that one year period. However, even if within the warranty period we accept absolutely no liability for any loss caused by natural disasters or improper product use. Copying or reprinting the contents described in this material in whole or in part is prohibited without our prior permission.

HAMAMATSU

www.hamamatsu.com

HAMAMATSU PHOTONICS K.K., Solid State Division

1126-1 Ichino-cho, Higashi-ku, Hamamatsu City, 435-8558 Japan, Telephone: (81) 53-434-3311, Fax: (81) 53-434-5184

U.S.A.: Hamamatsu Corporation: 360 Foothill Road, Bridgewater, N.J. 08807, U.S.A., Telephone: (1) 908-231-0960, Fax: (1) 908-231-1218, E-mail: usa@hamamatsu.com

Germany: Hamamatsu Photonics Deutschland GmbH: Arzbergerstr. 10, D-82211 Herrsching am Ammersee, Germany, Telephone: (49) 8152-375-0, Fax: (49) 8152-265-8, E-mail: info@hamamatsu.de

France: Hamamatsu Photonics France S.A.R.L.: 19, Rue du Saule Trapu, Parc du Moulin de Massy, 91882 Massy Cedex, France, Telephone: 33-(1) 69 53 71 00, Fax: 33-(1) 69 53 71 10, E-mail: infos@hamamatsu.fr

United Kingdom: Hamamatsu Photonics UK Limited: 2 Howard Court, 10 Tewin Road, Welwyn Garden City, Hertfordshire AL7 1BW, United Kingdom, Telephone: (44) 1707-294888, Fax: (44) 1707-325777, E-mail: info@hamamatsu.co.uk

North Europe: Hamamatsu Photonics Norden AB: Torshamnsgatan 35 16440 Kista, Sweden, Telephone: (46)8-509 031 00, Fax: (46)8-509 031 01, E-mail: info@hamamatsu.se

Italy: Hamamatsu Photonics Italia S.r.l.: Strada della Moia, 1 int. 6, 20020 Arese (Milano), Italy, Telephone: (39)02-93 58 17 33, Fax: (39)02-93 58 17 41, E-mail: info@hamamatsu.it

China: Hamamatsu Photonics (China) Co., Ltd.: B1201, Jiaming Center, No.27 Dongsanhuan Beilu, Chaoyang District, Beijing 100020, China, Telephone: (86) 10-6586-6006, Fax: (86) 10-6586-2866, E-mail: hpc@hamamatsu.com.cn

Taiwan: Hamamatsu Photonics Taiwan Co., Ltd.: 8F-3, No. 158, Section2, Gongdao 5th Road, East District, Hsinchu, 300, Taiwan R.O.C. Telephone: (886)03-659-0080, Fax: (886)03-659-0081, E-mail: info@hamamatsu.com.tw